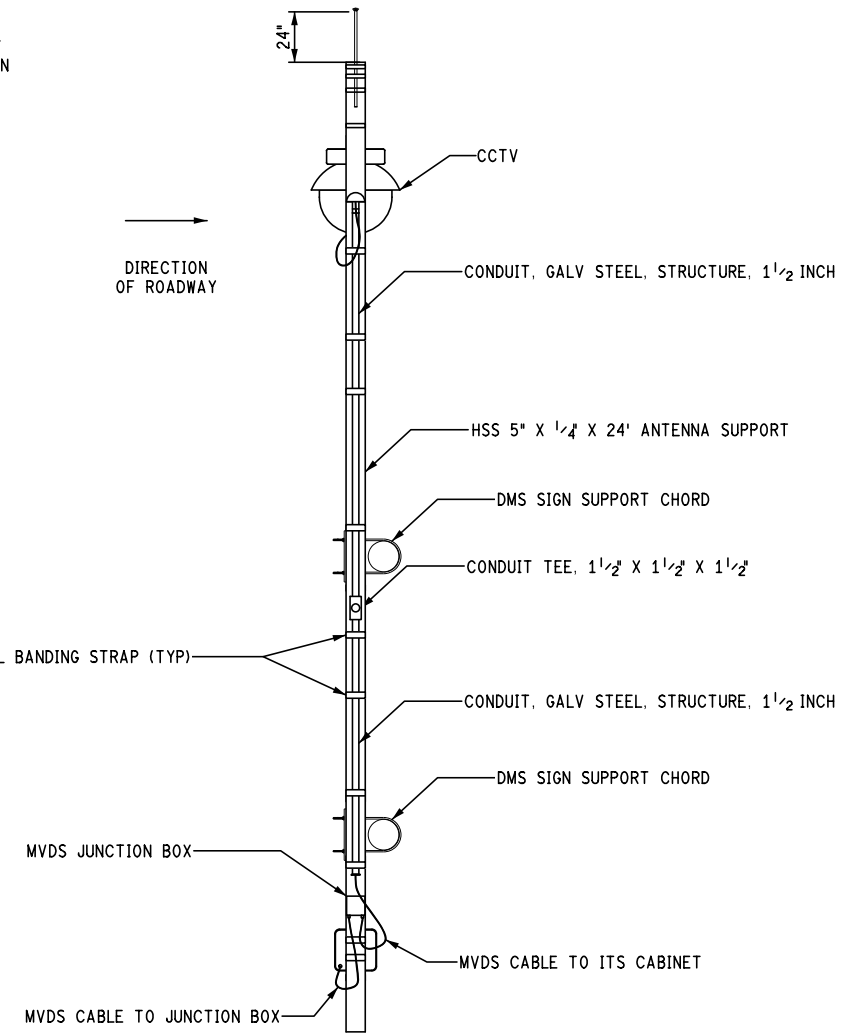


ELEVATION  
DMS STRUCTURE REAR VIEW



- NOTES:
1. MOUNT CCTV AS CLOSE TO TOP OF DMS ANTENNA SUPPORT AS POSSIBLE WHILE MAINTAINING RELEVANT LOCAL AND NATIONAL CODES.
  2. SEE "DMS SIGN SUPPORT" DETAIL FOR ADDITIONAL REQUIREMENTS.
  3. IT IS THE CONTRACTOR'S RESPONSIBILITY TO INSTALL CAMERA TO PROVIDE BEST VIEWING ANGLE OF BOTH DIRECTIONS OF TRAFFIC. FINAL PLACEMENT SHALL BE INCLUDED IN THE PRE-CONSTRUCTION SITE SURVEY AND APPROVED BY THE ENGINEER.
  4. IT IS THE CONTRACTOR'S RESPONSIBILITY TO DETERMINE FINAL MOUNTING HEIGHT "E" OF MVDS TO PROVIDE OPTIMAL MVDS PERFORMANCE. FINAL PLACEMENT SHALL BE INCLUDED IN THE PRE-CONSTRUCTION SITE SURVEY AND APPROVED BY THE ENGINEER.
  5. IT IS THE CONTRACTOR'S RESPONSIBILITY TO INSTALL ANTENNA SUPPORT AT AN OFFSET "D" FROM THE EDGE OF DMS SUPPORT CHORD TO PROVIDE OPTIMAL MVDS PERFORMANCE. FINAL MVDS PLACEMENT MAY BE BELOW BOTTOM DMS SUPPORT CHORD OR ABOVE TOP DMS SUPPORT CHORD. FINAL PLACEMENT SHALL BE INCLUDED IN THE PRE-CONSTRUCTION SITE SURVEY AND APPROVED BY THE ENGINEER.
  6. SECURE ALL CONDUIT, CONDUIT TEES, AND CABLES IN ACCORDANCE WITH NEC AND RELEVANT LOCAL AND NATIONAL CODES.
  7. ANTENNA SUPPORT SHALL NOT EXTEND BEYOND 13 FEET ABOVE THE TOP OF THE TOP DMS SIGN SUPPORT CHORD.

FINAL ROW PLAN REVISIONS (SUBMITTAL DATE: )									NO SCALE	DATE: 1/6/2017	CS:	MOUNT CCTV AND MVDS ON DMS ANTENNA SUPPORT	DRAWING SHEET			
NO.	DATE	AUTH	DESCRIPTION	NO.	DATE	AUTH	DESCRIPTION			PRINT DATE: 1/6/2017	DESIGN UNIT:			JN:	SHEET 1 OF 1	SECT
										FILE: CCTV MVDS Mt-1-6-2017 ITS034A	TSC:					